

Specifications

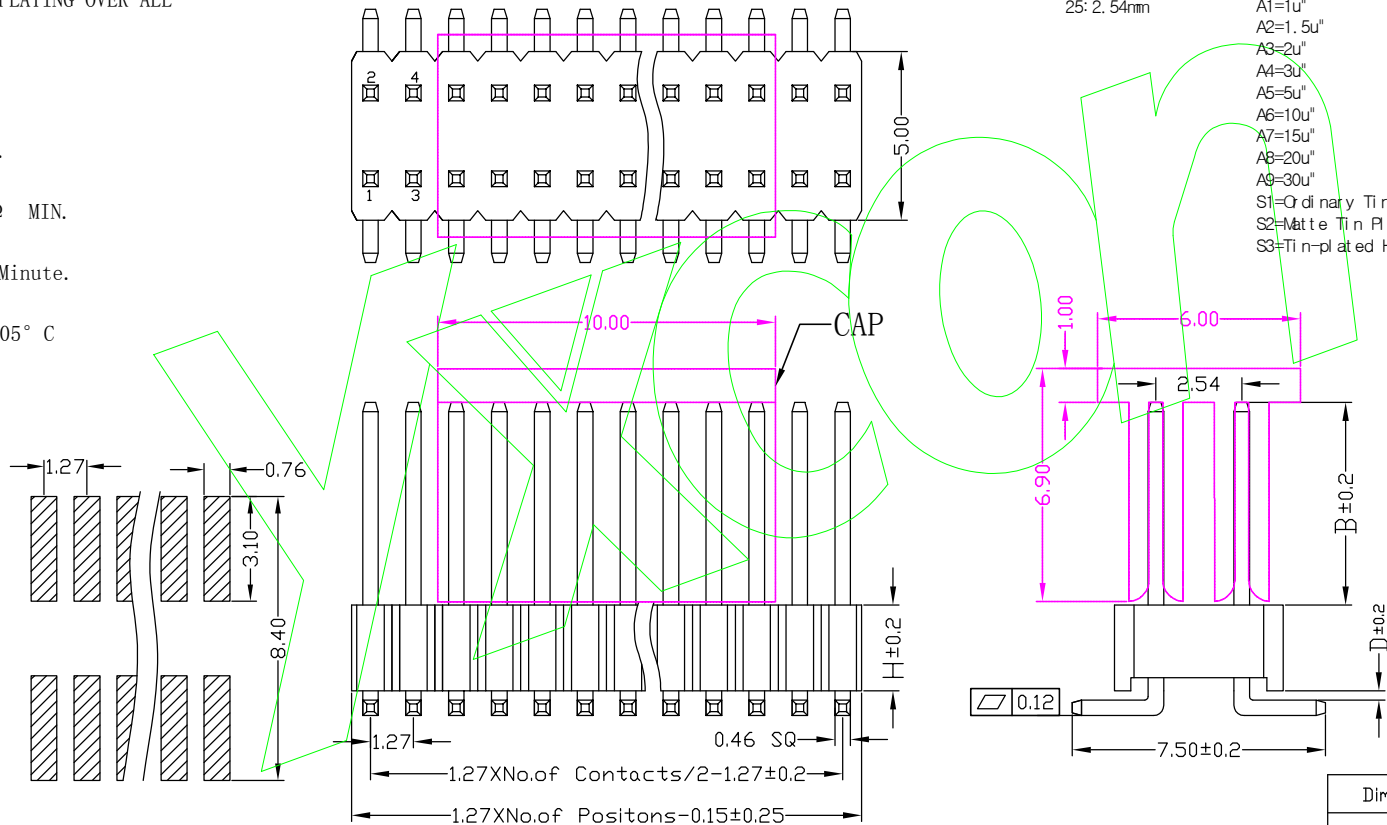
备注 (Remark)
 1. 材料 (MATERIAL)
 胶芯: PA6T+30%G.F UL94V-0, 颜色: 黑色.
 Housing: PA6T+30%G.F UL94V-0, Color: Black
 四方针: 黄铜, 镍底30u"MIN, 表面镀金0.8u"MIN
 Contact: Brass, 0.8u"MIN GOLD PLATING OVER ALL
 30u" MIN NICKEL UNDERPLATING OVER ALL

2. 特性 (characteristics):
 额定电流: 1 AMP
 Rating Current: 1 AMP.
 接触阻抗: 20 mΩ MAX.
 Contact Resistance: 20 mΩ MAX.
 绝缘阻抗: 1000 MΩ MIN.
 Insulating Resistance: 1000 MΩ MIN.
 耐电压: AC 500V/分钟.
 Withstanding Voltage: AC 500V/Minute.
 温度范围: -40° C to +105° C
 Temperature Range: -40° C to +105° C

Ordering Information

P4XX-12 XX XX X M XXX X 1

| HEIGHT OF HOUSING | NO. OF PINS PER ROW | Contact Plating Full of Gold | Semi-gold | INSULATOR MATERIAL | LENGTH OF TERMINAL | PACKING |
|-------------------------|---------------------|--|--|--------------------|--|---------|
| 17: 1.7mm 25: 2.54mm | 2-50P | A0=0.8u" A1=1u" A2=1.5u" A3=2u" A4=3u" A5=5u" A6=10u" A7=15u" A8=20u" A9=30u" | B0=0.8U' B1=1U' B2=1.5U' B3=2U' B4=3U' B5=5U' B6=10U' B7=15U' B8=20U' B9=30U' | C PA6T D LCP | A: PE Bag B: Tape & Reel C: Tube D: Tube+CAP E: Tray | |
| | | S1=Ordinary Tin Plated S2=Matte Tin Plated S3=Tin-plated High-temperature | | | | |



| ITEM | B | D | H |
|-----------|-----|-----|---------------|
| Standard | 2.8 | 6.0 | 0 1.2 1.7 2.5 |
| Alternate | | | |

| | | | | | | | | | | | |
|-----|------|--------|--------------------------|-----------|-------|-------|-------|---------|---------------|---|--------------------------|
| | | | | OPERATION | | SCALE | | Fit | | 东莞市宇熙精密连接器有限公司 www.yxcon.com Dongguan Yuxi Electronic Co.,Ltd. | |
| | | | | X.X | ±0.25 | UNIT | | MM | | | |
| | | | | X.XX | ±0.20 | SIZE | A4 | DESIGN | 周芳杰 2021.6.15 | PART NO. | P4XX-12XXXXXX1 |
| | | | | X.XXX | ±0.10 | SHEET | 1/1 | CHECK | | TITLE: | 1.27间距 2.54排距 双排针 单塑 SMT |
| REV | DATE | SYMBOL | MODIFICATION DESCRIPTION | | Angle | ±3° | PROJ. | APPROVE | | Customer No. | |
| | | | | | DIM | TOL | | | | | |

Specifications

备注 (Remark)

1. 材料 (MATERIAL)

胶芯: PA6T+30%G.F UL94V-0, 颜色: 黑色.
 Housing: PA6T+30%G.F UL94V-0, Color: Black
 四方针: 黄铜, 镍底30u"MIN, 表面镀金0.8u"MIN
 Contact: Brass, 0.8u"MIN GOLD PLATING OVER ALL
 30u" MIN NICKEL UNDERPLATING OVER ALL

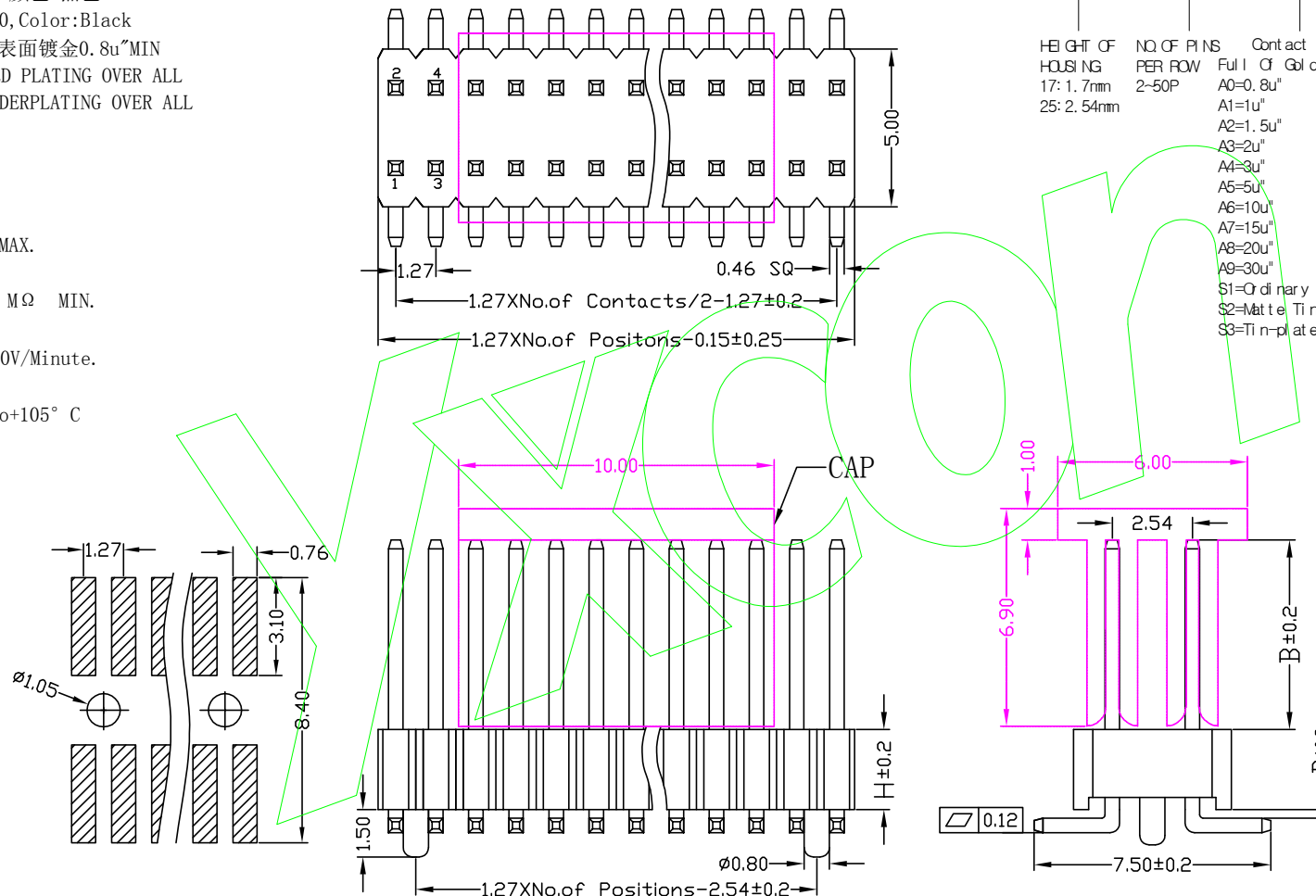
2. 特性 (characteristics):

额定电流: 1 AMP
 Rating Current: 1 AMP.
 接触阻抗: 20 mΩ MAX.
 Contact Resistance: 20 mΩ MAX.
 绝缘阻抗: 1000 MΩ MIN.
 Insulating Resistance: 1000 MΩ MIN.
 耐电压: AC 500V/分钟.
 Withstanding Voltage: AC 500V/Minute.
 温度范围: -40° C to +105° C
 Temperature Range: -40° C to +105° C

Ordering Information

P4XX-12 XX XX X M XXX X 2

| HEIGHT OF HOUSING | NO. OF PINS PER ROW | Contact Full of Gold | Contact Plating Semi-gold | INSULATOR LENGTH MATERIAL: OF | PACKING |
|-------------------|---------------------|--------------------------------|---------------------------|-------------------------------|----------------|
| 17: 1.7mm | 2-50P | A0=0.8u" | B0=0.8u" | B: PA6T | A: PE Bag |
| 25: 2.54mm | | A1=1u" | B1=1u" | C: PA9T | B: Tape & Reel |
| | | A2=1.5u" | B2=1.5u" | D: LCP | C: Tube |
| | | A3=2u" | B3=2u" | | D: Tube+CAP |
| | | A4=3u" | B4=3u" | | E: Tray |
| | | A5=5u" | B5=5u" | | |
| | | A6=10u" | B6=10u" | | |
| | | A7=15u" | B7=15u" | | |
| | | A8=20u" | B8=20u" | | |
| | | A9=30u" | B9=30u" | | |
| | | S1=Ordinary Tin Plated | | | |
| | | S2=Matte Tin Plated | | | |
| | | S3=Tin-plated High-temperature | | | |



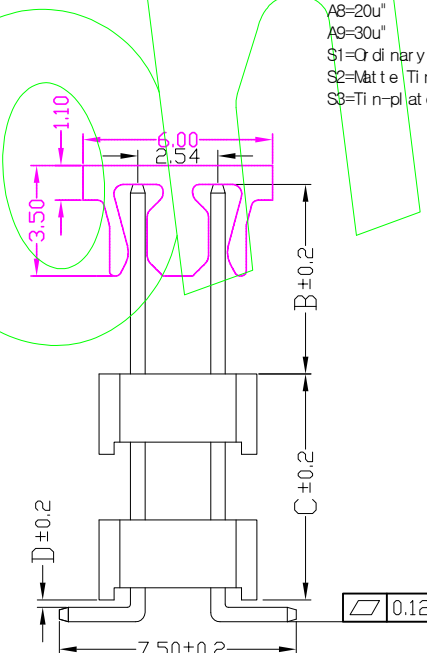
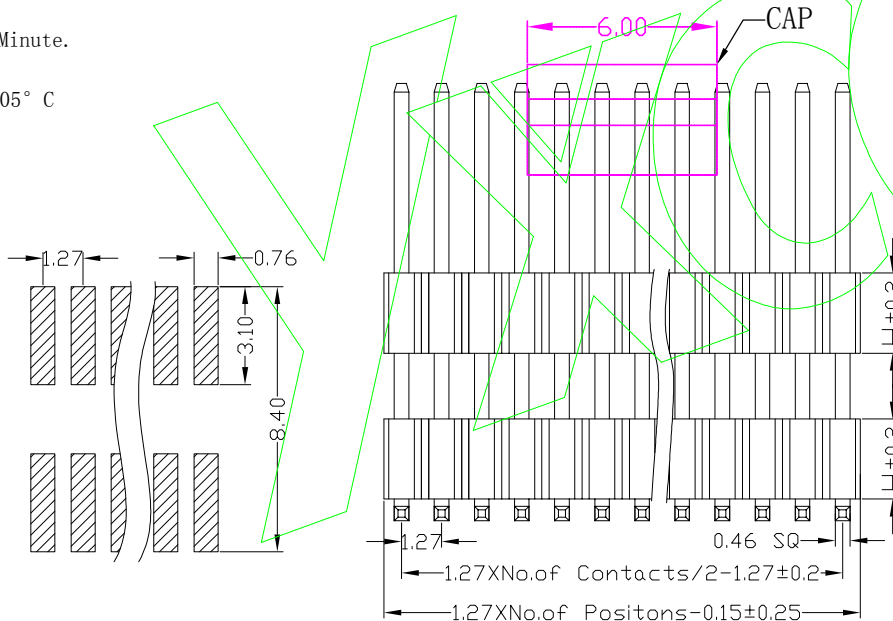
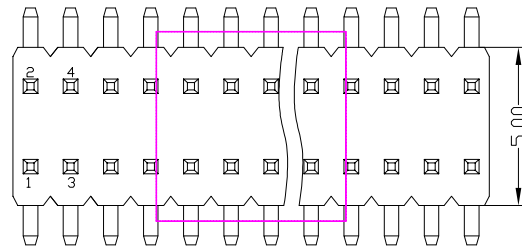
| ITEM | B | D | H |
|-----------|-----|-----|---------------|
| Standard | 2.8 | 6.0 | 0 1.2 1.7 2.5 |
| Alternate | | | |

| | | | | | | | | | | | |
|--|--|--|--|-------------|--|-------|--|---------|--|--|--|
| | | | | OPERATION | | SCALE | | Fit | | 东莞市宇熙精密连接器有限公司 www.yxcon.com Dongguan Yuxi Electronic Co., Ltd. | |
| | | | | X.X ±0.25 | | UNIT | | MM | | | |
| | | | | X.XX ±0.20 | | SIZE | | A4 | | DESIGN | |
| | | | | X.XXX ±0.10 | | SHEET | | 1/1 | | CHECK | |
| | | | | Angle ±3° | | PRQ. | | APPROVE | | PART NO. | |
| | | | | DIM TOL | | | | | | TITLE: | |
| | | | | | | | | | | Customer No. | |

Specifications

备注 (Remark)
 1. 材料 (MATERIAL)
 胶芯: PA6T+30%G.F UL94V-0, 颜色: 黑色.
 Housing: PA6T+30%G.F UL94V-0, Color: Black
 四方针: 黄铜, 镍底30u~MIN, 表面镀金0.8u~MIN
 Contact: Brass, 0.8u~MIN GOLD PLATING OVER ALL
 30u~MIN NICKEL UNDERPLATING OVER ALL

2. 特性 (characteristics):
 额定电流: 1 AMP
 Rating Current: 1 AMP.
 接触阻抗: 20 mΩ MAX.
 Contact Resistance: 20 mΩ MAX.
 绝缘阻抗: 1000 MΩ MIN.
 Insulating Resistance: 1000 MΩ MIN.
 耐电压: AC 500V/分钟.
 Withstanding Voltage: AC 500V/Minute.
 温度范围: -40° C to +105° C
 Temperature Range: -40° C to +105° C



| ITEM | B | D | H | C |
|-----------|-----|-----|---|-----|
| Standard | 2.8 | 6.0 | 0 | 1.2 |
| Alternate | | | | |

Ordering Information

P4XX-22 XX XX X M XXX X 1

| HEIGHT OF HOUSING | NO. OF PINS PER ROW | Contact Full of Gold | Plating Semi-gold | INSULATOR MATERIAL | LENGTH OF TERMINAL | PACKING |
|-------------------|---------------------|--|--|------------------------------|--------------------|--|
| 17: 1.7mm | 2-50P | A0=0.8u" A1=1u" A2=1.5u" A3=2u" A4=3u" A5=5u" A6=10u" A7=15u" A8=20u" A9=30u" | B0=0.8u" B1=1u" B2=1.5u" B3=2u" B4=3u" B5=5u" B6=10u" B7=15u" B8=20u" B9=30u" | B: PA6T C: PA9T D: LCP | | A: PE Bag B: Tape & Reel C: Tube D: Tube+CAP E: Tray |

S1=Ordinary Tin Plated
 S2=Matte Tin Plated
 S3=Tin-plated High-temperature

| REV | DATE | SYMBOL | MODIFICATION DESCRIPTION | OPERATION | | SCALE | | Fit | | Yxcon 东莞市宇熙精密连接器有限公司 | |
|-----|------|--------|--------------------------|-----------|-------|-------|-----|---------|---------------|------------------------------------|--------------------------|
| | | | | X.X | ±0.25 | UNIT | | MM | www.yxcon.com | Dongguan Yuxi Electronic Co., Ltd. | |
| | | | | X.XX | ±0.20 | SI ZE | A4 | DESIGN | 周芳杰 2021.6.15 | PART NO | P4XX-22XXXXXXMXXXX1 |
| | | | | X.XXX | ±0.10 | SHEET | 1/1 | CHECK | | TITLE | 1.27间距 2.54排距 双排针 双塑 SMT |
| | | | | Angle | ±3° | PROJ. | ☉ | APPROVE | | Customer No. | |
| | | | | DIM | TOL | | | | | | |

Specifications

备注 (Remark)

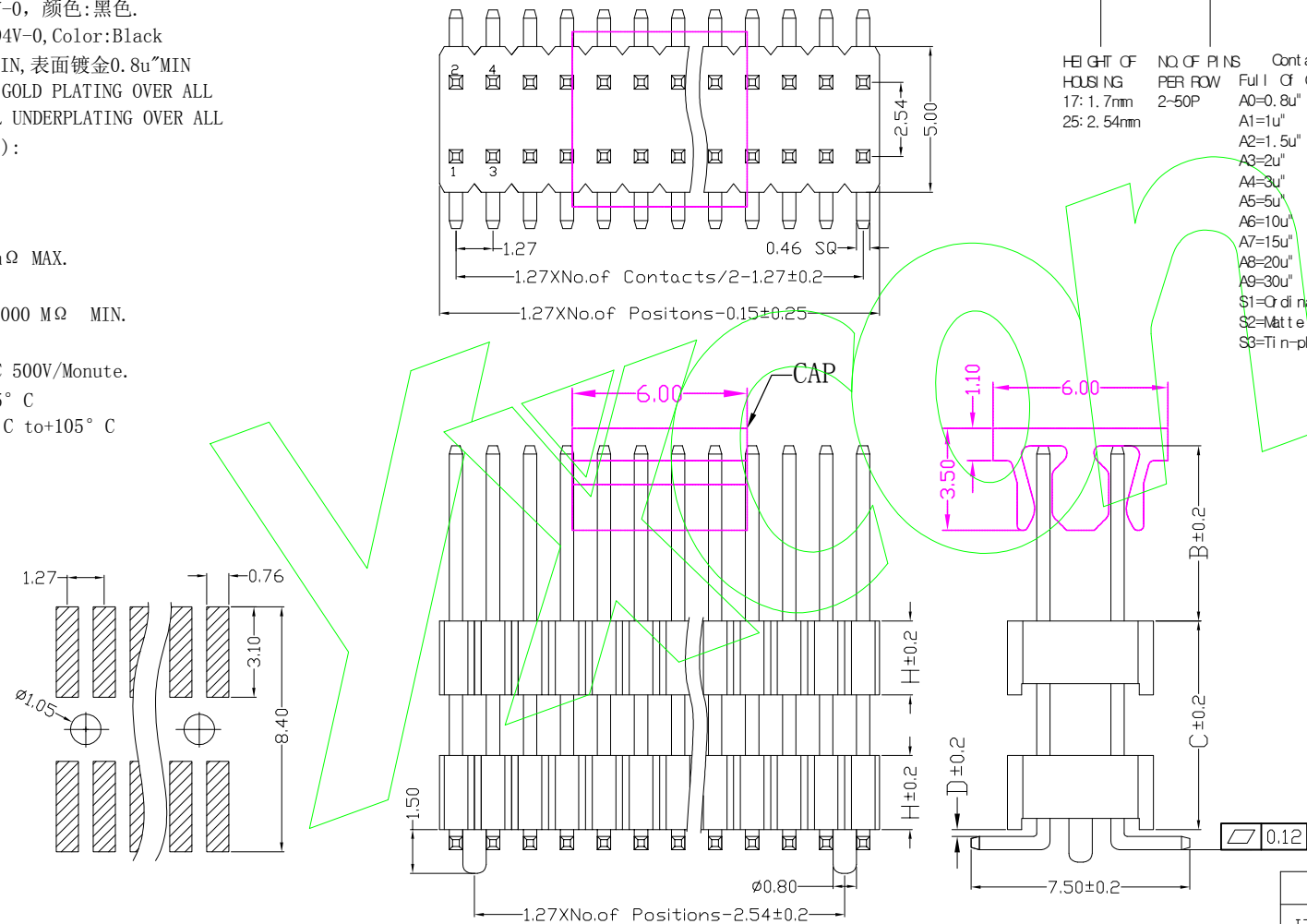
1. 材料 (MATERIAL)
 胶芯: PA6T+30%G.F UL94V-0, 颜色: 黑色.
 Housing: PA6T+30%G.F UL94V-0, Color: Black
 四方针: 黄铜, 镍底30u"MIN, 表面镀金0.8u"MIN
 Contact: Brass, 0.8u"MIN GOLD PLATING OVER ALL
 30u" MIN NICKEL UNDERPLATING OVER ALL

2. 特性 (characteristics):
 额定电流: 1 AMP
 Rating Current: 1 AMP.
 接触阻抗: 20 mΩ MAX.
 Contact Resistance: 20 mΩ MAX.
 绝缘阻抗: 1000 MΩ MIN.
 Insulating Resistance: 1000 MΩ MIN.
 耐电压: AC 500V/分钟.
 Withstanding Voltage: AC 500V/Minute.
 温度范围: -40° C to +105° C
 Temperature Range: -40° C to +105° C

Ordering Information

P4XX-22 XX XX X M XXX X 2

| HEIGHT OF HOUSING | NO. OF PINS PER ROW | Contact Full of Gold | Plating Semi-gold | INSULATOR MATERIAL | LENGTH OF TERMINAL | PACKING |
|-------------------------|---------------------|--|--|------------------------------|--|---------|
| 17: 1.7mm 25: 2.54mm | 2-50P | A0=0.8u" A1=1u" A2=1.5u" A3=2u" A4=3u" A5=5u" A6=10u" A7=15u" A8=20u" A9=30u" | B0=0.8U" B1=1U" B2=1.5U" B3=2U" B4=3U" B5=5U" B6=10U" B7=15U" B8=20U" B9=30U" | B: PA6T C: PA9T D: LCP | A: PE Bag B: Tape & Reel C: Tube D: Tube+CAP E: Tray | |
| | | \$1=Ordinary Tin Plated \$2=Matte Tin Plated \$3=Tin-plated High-temperature | | | | |



| ITEM | B | D | H | C |
|-----------|-----|-----|---|-----|
| Standard | 2.8 | 6.0 | 0 | 1.2 |
| Alternate | | | | |

| | | | | | | | | | | | |
|-----|------|--------|--------------------------|-----------|-------|-------|-----|---------|---------------|--|-----------------------------|
| | | | | OPERATION | | SCALE | | Fit | | 东莞市宇熙精密连接器有限公司 www.yxcon.com Dongguan Yuxi Electronic Co., Ltd. | |
| | | | | X.X | ±0.25 | UNIT | | MM | | | |
| | | | | X.XX | ±0.20 | SIZE | A4 | DESIGN | 周芳杰 2021.6.15 | PART NO. | P4XX-22XXXXXXMXXXX2 |
| | | | | X.XXX | ±0.10 | SHEET | 1/1 | CHECK | | TITLE: | 1.27间距 2.54排距 双排针 双型 SMT 带柱 |
| | | | | Angle | ±3° | PROJ. | | APPROVE | | Customer No. | |
| | | | | DIM | TOL | | | | | | |
| REV | DATE | SYMBOL | MODIFICATION DESCRIPTION | | | | | | | | |