

Specifications

Wafer

備注 (Remark)

1. 材料 (Material)

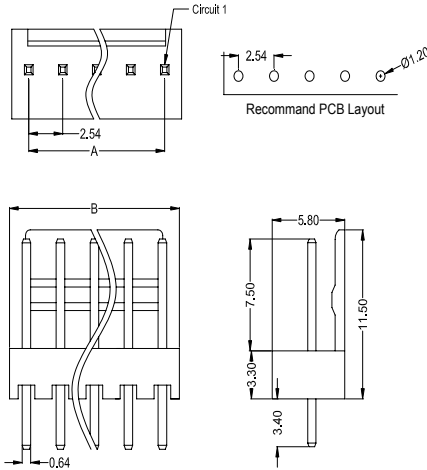
膠芯: PA66 UL94V-0/2

Housing: PA66 UL94V-0/2

端子: 黃銅

Contact: Brass

2510WV-XX-XXSN



2510WV-XX-XXSN

Poles	Dimensions (mm)		Poles	Dimensions (mm)	
	A	B		A	B
2	2.54	5.08	12	27.94	30.48
3	5.08	7.62	13	30.48	33.02
4	7.62	10.16	14	33.02	35.56
5	10.16	12.70	15	35.56	38.10
6	12.70	15.24	16	38.10	40.64
7	15.24	17.78	17	40.64	43.18
8	17.78	20.32	18	43.18	45.72
9	20.32	22.86	19	45.72	48.26
10	22.86	25.40	20	48.26	50.80
11	25.40	27.94			

2510WV-XX-XXSN	Nylon 66 UL 94V-0	Brass	Tin-Plated	2510H	1,000Pcs
2510WV-XX-XXSN	Nylon 66 UL 94V-2	Brass	Tin-Plated	2510H	1,000Pcs
PART NO	Material	Material(Pin)	Finish(Pin)	Mates With SWB Housing	Q' ty/Bag

Housing

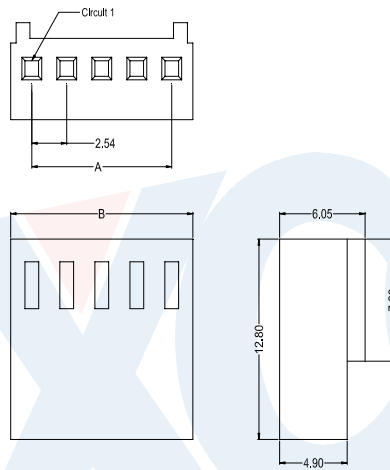
備注 (Remark)

1. 材料 (Material)

膠芯: PA66 UL94V-2

Housing: PA66 UL94V-2

2510H-XX-N2



2510H-XX-N2

Poles	Dimensions(mm)		Poles	Dimensions(mm)	
	A	B		A	B
02	2.54	5.68	10	22.86	26.00
03	5.08	8.22	11	25.40	28.54
04	7.62	10.76	12	27.94	31.08
05	10.16	13.30	13	30.48	33.62
06	12.70	15.84	14	33.02	36.16
07	15.24	18.38	15	35.56	38.70
08	17.78	20.92	16	38.10	41.24
09	20.32	23.46			

2510H-XX-N2	Nylon 66 UL 94V-2	2510T	2510W
PART NO	Material	Suitable SWB Terminal	Mates With SWB Wafer

Terminal

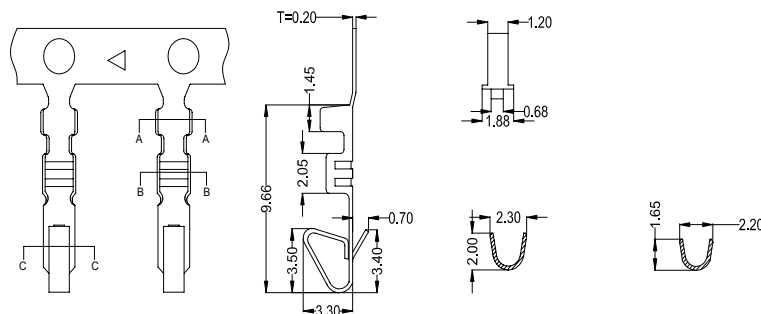
備注 (Remark)

1. 材料 (Material)

端子: 黃銅

Contact: Brass

2510T-BSNX



2510T-BSNX

2510T-BSNB	Brass	AWG#22-28	1.57mm(Max)	Plating Before Stamping:10~30u" Ni;40~60u"Sn	2510H	10,000Pcs
2510T-BSN				Stamping Before Plating:30~50u" Ni;70~120u"Sn		
PART NO	Material	Wire Range	Insulation O.D.	Finish	Used In SWB Housing	Q' ty/Reel