

Specifications

Wafer

備注 (Remark)

1. 材料 (Material)

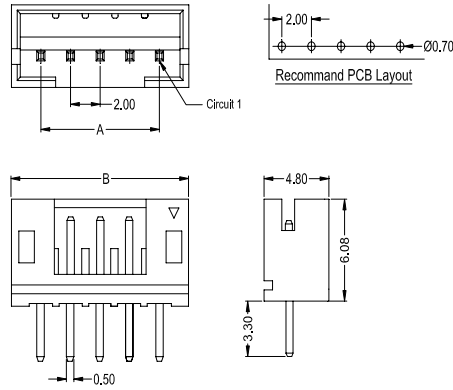
膠芯: PA46/PA66/PA6T UL94V-0

Housing: PA46/PA66/PA6T UL94V-0

端子: 黃銅

Contact: Brass

2016WV-XX-XXSN



2016WV-XX-XXSN

| | | | | | |
|----------------|-------------------|----------------|--------------|------------------------|----------|
| 2016WV-XX-6TSN | Nylon 6T UL 94V-0 | Brass | Tin-Plated | 2016H | 1,000Pcs |
| 2016WV-XX-46SN | Nylon 46 UL 94V-0 | | | | |
| 2016WV-XX-N0SN | Nylon 66 UL 94V-0 | | | | |
| PART NO | Material | Material (Pin) | Finish (Pin) | Mates With SWB Housing | Qty/Bag |

| Poles | Dimensions (mm) | | Poles | Dimensions (mm) | |
|-------|-----------------|-------|-------|-----------------|-------|
| | A | B | | A | B |
| 02 | 2.00 | 6.00 | 12 | 22.00 | 26.00 |
| 03 | 4.00 | 8.00 | 13 | 24.00 | 28.00 |
| 04 | 6.00 | 10.00 | 14 | 26.00 | 30.00 |
| 05 | 8.00 | 12.00 | 15 | 28.00 | 32.00 |
| 06 | 10.00 | 14.00 | 16 | 30.00 | 34.00 |
| 07 | 12.00 | 16.00 | 17 | 32.00 | 36.00 |
| 08 | 14.00 | 18.00 | 18 | 34.00 | 38.00 |
| 09 | 16.00 | 20.00 | 19 | 36.00 | 40.00 |
| 10 | 18.00 | 22.00 | 20 | 38.00 | 42.00 |
| 11 | 20.00 | 24.00 | | | |

Housing

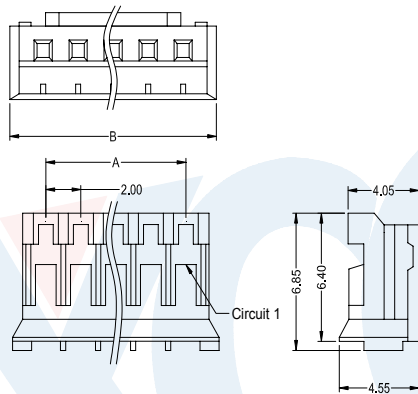
備注 (Remark)

1. 材料 (Material)

膠芯: PA66 UL94V-0

Housing: PA66 UL94V-0

2016H-XX-N0XX



2016H-XX-N0XX

| | | | | |
|---------------|----------------------------|-----------------------|----------------------|----------|
| 2016H-XX-N0-C | Nylon 66 UL 94V-0 | 2016T | 2016W | 1,000Pcs |
| 2016H-XX-N0HF | PA66 UL 94V-0 Halogen Free | | | |
| 2016H-XX-N0 | Nylon 66 UL 94V-0 | | | |
| PART NO | Material | Suitable SWB Terminal | Mates With SWB Wafer | Qty/Bag |

| Poles | Dimensions (mm) | | Poles | Dimensions (mm) | |
|-------|-----------------|-------|-------|-----------------|-------|
| | A | B | | A | B |
| 02 | 2.00 | 5.80 | 12 | 22.00 | 25.80 |
| 03 | 4.00 | 7.80 | 13 | 24.00 | 27.80 |
| 04 | 6.00 | 9.80 | 14 | 26.00 | 29.80 |
| 05 | 8.00 | 11.80 | 15 | 28.00 | 31.80 |
| 06 | 10.00 | 13.80 | 16 | 30.00 | 33.80 |
| 07 | 12.00 | 15.80 | 17 | 32.00 | 35.80 |
| 08 | 14.00 | 17.80 | 18 | 34.00 | 37.80 |
| 09 | 16.00 | 19.80 | 19 | 36.00 | 39.80 |
| 10 | 18.00 | 21.80 | 20 | 38.00 | 41.80 |
| 11 | 20.00 | 23.80 | | | |

W

WAFER

Terminal

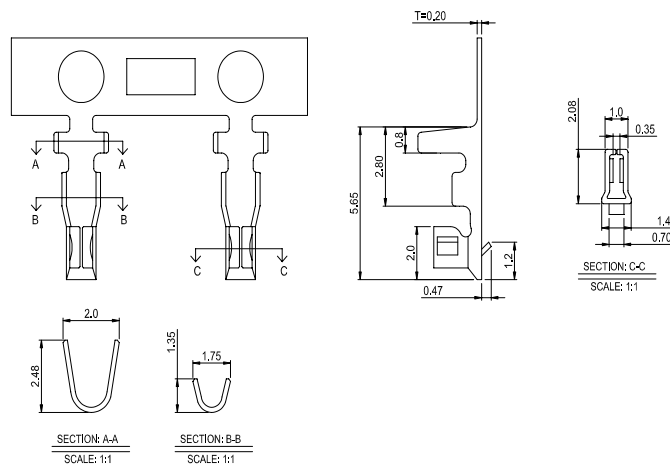
備注 (Remark)

1. 材料 (Material)

端子: 磷青銅

Contact: Phosphor bronze

2016T-PSN



2016T-PSN

| | | | | | | |
|------------|-----------------|------------|-----------------|---|---------------------|-----------|
| 2016T-PV01 | Phosphor Bronze | AWG#22-28 | 1.50mm(Max) | Stamping Before Pating: 30~50u" Ni; Whole Gold : 1u" Min. | 2016H | 10,000Pcs |
| 2016T-PSN | | | | Stamping Before Pating: 30~50u" Ni; 70~120u" Sn | | |
| PART NO | Material | Wire Range | Insulation O.D. | Finish | Used In SWB Housing | Qty/Reel |