

Specifications

Wafer

備注 (Remark)

1. 材料 (Material)

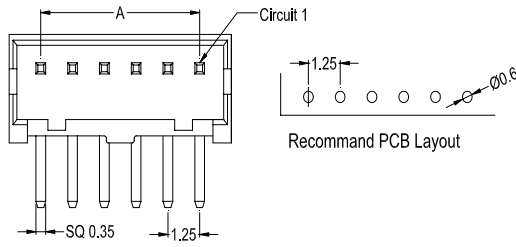
膠芯: PA66 UL94V-0

Housing: PA66 UL94V-0

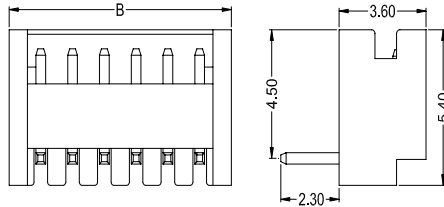
端子: 黃銅

Contact: Brass

9812WR-XX-NOSN



9812WR-XX-NOSN



Poles	Dimensions (mm)		Poles	Dimensions (mm)	
	A	B		A	B
2	1.25	3.75	9	10.00	12.50
3	2.50	5.00	10	11.25	13.75
4	3.75	6.25	11	12.50	15.00
5	5.00	7.50	12	13.75	16.25
6	6.25	8.75	13	15.00	17.50
7	7.50	10.00	14	16.25	18.75
8	8.75	11.25	15	17.50	20.00

9812WR-XX-NOSN	Nylon 66 UL 94V-0	Brass	Tin-Plated	9812H	1,000Pcs
PART NO	Material	Material(Pin)	Finish(Pin)	Mates With SWB Housing	Q'ty/Bag

Wafer

備注 (Remark)

1. 材料 (Material)

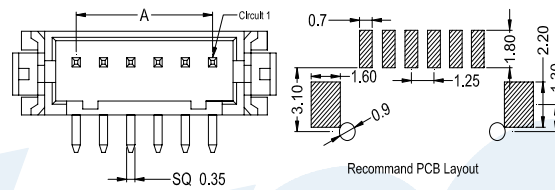
膠芯: PA66 UL94V-0

Housing: PA66 UL94V-0

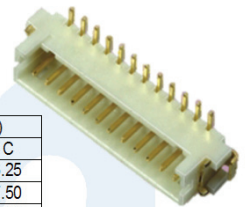
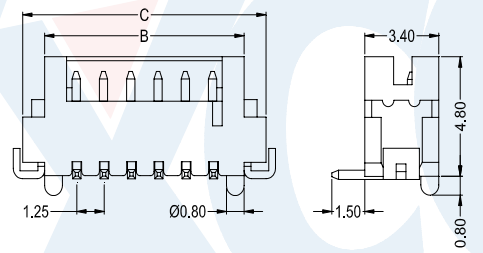
端子: 黃銅

Contact: Brass

9812WWS-XX-6TSN



Poles	Dimensions (mm)		
	A	B	C
2	1.25	4.15	6.25
3	2.50	5.40	7.50
4	3.75	6.65	8.75
5	5.00	7.90	10.00
6	6.25	9.15	11.25
7	7.50	10.40	12.50
8	8.75	11.65	13.75
9	10.00	12.90	15.00
10	11.25	14.15	16.25
11	12.50	15.40	17.50
12	13.75	16.65	18.75
13	15.00	17.90	20.00
14	16.25	19.15	21.25
15	17.50	20.40	22.50



9812WWS-XX-6TSN

9812WWS-XX-6TSN	PA6T UL 94V-0	Brass	Tin-Plated	Phosphor Bronze	Tin-Plated	9812H	1,000Pcs
PART NO	Material	Material(Pin)	Finish(Pin)	Material (Solder Tabs)	Finish (Solder Tabs)	Mates With SWB Housing	Q'ty/Reel

Wafer

備注 (Remark)

1. 材料 (Material)

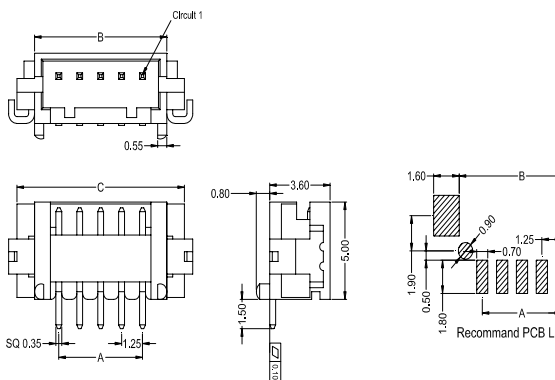
膠芯: PA6T UL94V-0

Housing: PA6T UL94V-0

端子: 黃銅

Contact: Brass

9812WRS-XX-6TSN



Poles	Dimensions (mm)		
	A	B	C
2	1.25	4.15	6.25
3	2.50	5.40	7.50
4	3.75	6.65	8.75
5	5.00	7.90	10.00
6	6.25	9.15	11.25
7	7.50	10.40	12.50
8	8.75	11.65	13.75
9	10.00	12.90	15.00
10	11.25	14.15	16.25
11	12.50	15.40	17.50
12	13.75	16.65	18.75
13	15.00	17.90	20.00
14	16.25	19.15	21.25
15	17.50	20.40	22.50

9812WRS-XX-6TSN	PA6T UL 94V-0	Brass	Tin-Plated	Phosphor Bronze	Tin-Plated	9812H	1,000Pcs
PART NO	Material	Material(Pin)	Finish(Pin)	Material (Solder Tabs)	Finish (Solder Tabs)	Mates With SWB Housing	Q'ty/Reel



9812WRS-XX-6TSN