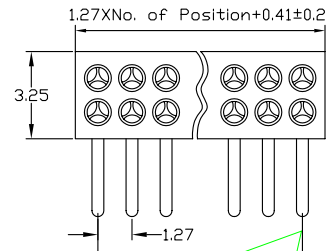
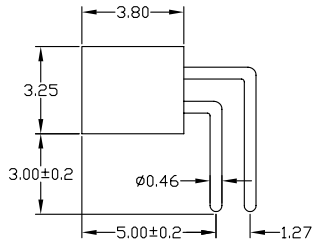
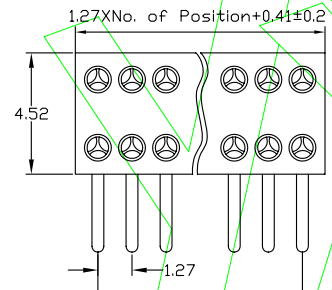
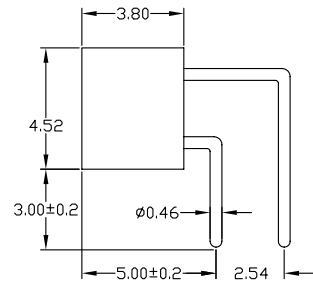


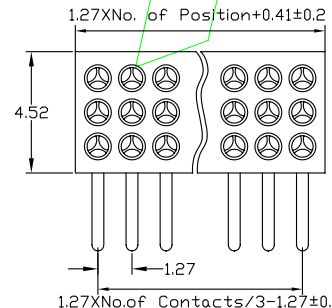
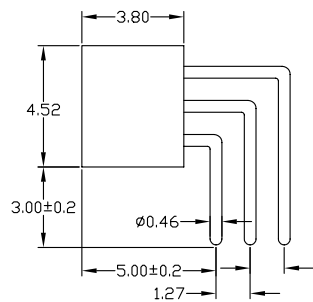
Right socket connector:solder tail
single row
Availability from:2 to 50 contacts
Standard number of contacts 25 and
50



Right socket connector:solder tail
double row
Availability from:4 to 100 contacts
Standard number of contacts 50 and
100



Right socket connector:solder tail
double row with 2.54mm rowto row
distance
Availability from:4 to 100 contacts
Standard number of contacts 100



Right socket connector:solder tail
triple row
Availability from:6 to 150 contacts
Standard number of contacts 150

Ordering Information

RF3XX-X XX X X X R XXX 1

HEIGHT OF HOUSING	1:Single-Row	NO. OF PINS PER ROW	0:No Pitch	A=1u"	A:PBT	LENGTH OF TERMINAL
38:3.8mm	2:Dual-Row	1-40P	1:1.27	B=2u"	B:PA6T	
41:4.1mm	3:Three Rows of	2-40P	2:2.00	C=5u"	C:PA9T	
		3-40P	3:2.54	D=10u"	D:LCP	
			4:7.62	E=15u"	G:PPS	
			5:10.16	F=30u"		
			6:15.24	S=Ordinary Tin Plated		
			7:22.86	H=Half gold plated Tin		

Specifications

Insulator : Black glass filled polyester PPS-GF30-FR
Flammability : UL94V-0
Sleeve : Brass CuZn 36Pb3(36000)
Contact clip(3 finger) : Beryllium copper (C17200)
Mating pin Ø : 0.38 to 0.50 mm
Forces : (polished steel gauge Ø0.41mm)
-Insertion : 0.5 N typ
-Withdrawal : 0.2 N typ
Mechanical life : min 500 cycles
Rated current : 1Amp
Contact resistance: Max 10mΩ
Dielectric resistance : Min 500V_{RMS}

				OPERATION		SCALE		Fit		东莞市宇熙精密连接器有限公司 Dongguan Yuxi Electronic Co.,Ltd.	
				X.X	±0.25	UNIT		MM			
				X.XX	±0.20	SIZE	A4	DESIGN	PART NO.		RF3XX-XXXXXXXXX1
				X.XXX	±0.10				SHEET	1/1	CHECK
REV	DATE	MODIFICATION DESCRIPTION		CHANGE	APPROVE	PROJ.	APPROVE	Customer No.			