

Specifications

Ordering Information

P825-11 XX XX D R XXX X 1

备注 (Remark)

1. 材料 (MATERIAL)

胶芯: LCP+30%G.F UL94V-0, 颜色: 黑色.

Housing: LCP+30%G.F UL94V-0, Color: Black

四方针: 黄铜, 镍底30u"MIN, 镀普通锡

Contact: Brass, ORDINARY TIN PLATED

30u" MIN NICKEL UNDERPLATING OVER ALL

2. 特性 (characteristics):

额定电流: 7 AMP

Rating Current: 7 AMP.

接触阻抗: 20 mΩ MAX.

Contact Resistance: 20 mΩ MAX.

绝缘阻抗: 1000 MΩ MIN.

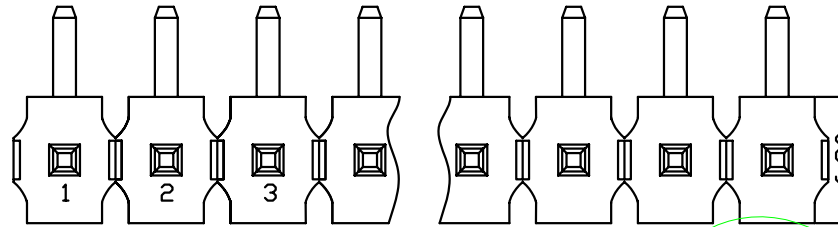
Insulating Resistance: 1000 MΩ MIN.

耐电压: AC 500V.

Withstanding Voltage: AC 500V.

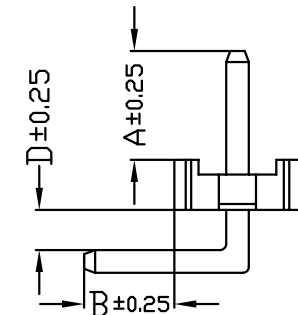
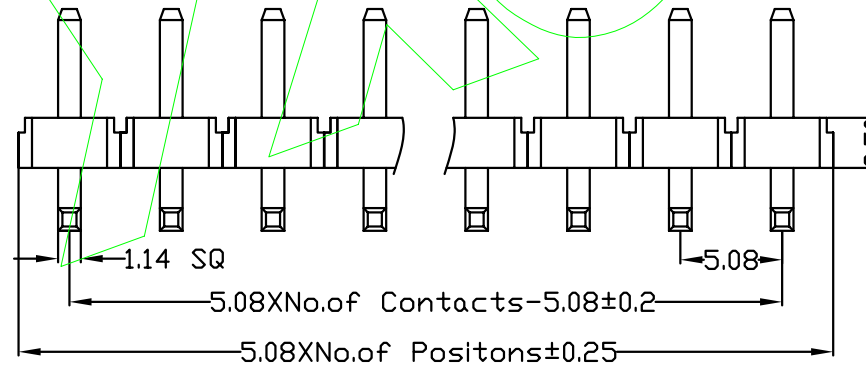
温度范围: -40°C to+105°C

Temperature Range: -40°C to+105°C



| | | | | | | |
|-------------------------------|-----------------------------|---|---|--------------------------------|--------------------|--|
| HEIGHT OF HOUSING 25:2.5mm | NO.OF PINS PER ROW 1-20P | Contact Plating Full of Gold A0=0.8u" A1=1u" A2=1.5u" A3=2u" A4=3u" A5=5u" A6=10u" A7=15u" A8=20u" A9=30u" | Semi-gold B0=0.8u" B1=1u" B2=1.5u" B3=2u" B4=3u" B5=5u" B6=10u" B7=15u" B8=20u" B9=30u" | INSULATOR MATERIAL: D:LCP | LENGTH OF TERMINAL | PACKING A:PE Bag B:Tape & Reel C:Tube D:Tube+CAP E:Tray |
| | | S1=Ordinary Tin Plated | S2=Matte Tin Plated | S3=Tin-plated High-temperature | | |

YXCON



| Dimension antitheses list | | | | |
|---------------------------|------|-----|----|-----------|
| ITEM | A | B | D | |
| Standard | 2.54 | 4.5 | 15 | 0.50 2.00 |
| Alternate | | | | |

| | | | | | | | | | | | |
|-----|------|--------------------------|--|-----------|---------|---------|-----|---|-----|--------------|----------------------|
| | | | | OPERATION | | SCALE | Fit | 东莞市宇熙精密连接器有限公司 Dongguan Yuxi Electronic Co.,Ltd. | | | |
| | | | | X.X | ±0.25 | UNIT | MM | | | | |
| | | | | X.XX | ±0.20 | SIZE | A4 | DESIGN | 卢小强 | PART NO. | P825-11XXXXRXXXX1 |
| | | | | X.XXX | ±0.10 | SHEET | 1/1 | CHECK | | TITLE: | 5.08mm 单排针 塑高2.5 90度 |
| | | | | Angle | ±3° | APPROVE | | | | Customer No. | |
| REV | DATE | MODIFICATION DESCRIPTION | | CHANGE | APPROVE | DIM | TOL | PROJ. | | | |