

Specifications

備注 (Remark)

1. 材料 (Material)

膠芯: PA9T/LCP +30%G.F UL94V-0, 顏色: 黑色

Housing: PA9T/LCP+30%G.F UL94V-0, Color: Black

端子: 磷銅

Contact: Phosphor Bronze

2. 特性 (characteristics):

額定電流: 0.75AMP

Rating Current: 0.75AMP

接觸阻抗: 20mΩ Max

Contact Resistance: 20mΩ Max

絕緣阻抗: 1000MΩ Min

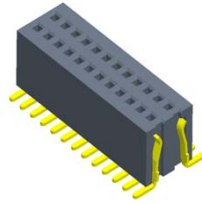
Insulating Resistance: 1000 MΩ Min

耐電壓: AC 500V/分钟

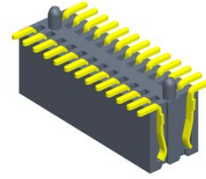
Withstanding Voltage: AC 500V/Minute

溫度範圍: -55° C to +125° C

Temperature Range: -55° C to +125° C



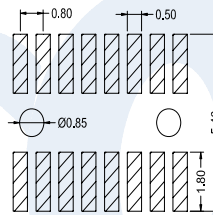
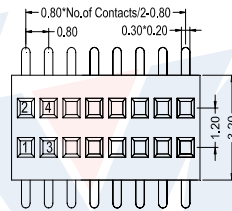
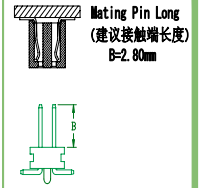
F631-12XXXXXMTX1



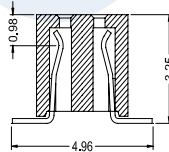
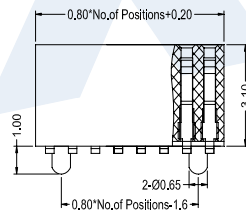
F631-12XXXXXMTX2



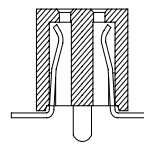
Mating With/配對公座:
P614



Recommended P.C.B Layout



TYPE 1



TYPE 2

F 631 - 12

XX

XX

X

M

T

X

X

No. Of Pins Per Row
02-50P

Contact Plating
Full Of Gold A0=0.8u"
Semi-Gold B0=0.8U"

A9=30u" B9=30U"
S1=Ordinary Tin Plated
S2=Matte Tin Plated

S3= Tin-plated High-temperature

Insulator Material:
B: PA6T
C: PA9T
D: LCP

Packing
A: PE Bag
B: Tape & Reel
C: Tube
D: Tube+CAP
E: Tray

Journal Number
1: Type1
2: Type2