

## Specifications

備注 (Remark)

1. 材料 (Material)

膠芯: PBT+30%G. F UL94V-0, 顏色: 黑色

Housing: PBT+30%G. F UL94V-0, Color: Black

端子: 黃銅

Contact: Brass

2. 特性 (characteristics):

額定電流: 1.00AMP

Rating Current: 1.00AMP

接觸阻抗: 20mΩ Max

Contact Resistance: 20mΩ Max

絕緣阻抗: 1000MΩ Min

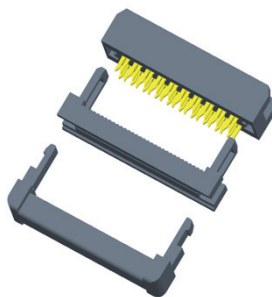
Insulating Resistance: 1000 MΩ MIN

耐電壓: AC 500V

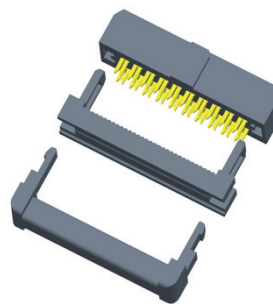
Withstanding Voltage: AC 500V/Minute

溫度範圍: -40° C to +105° C

Temperature Range: -40° C to +105° C

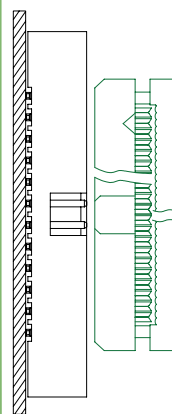


IDC2-XX354XXAYX1

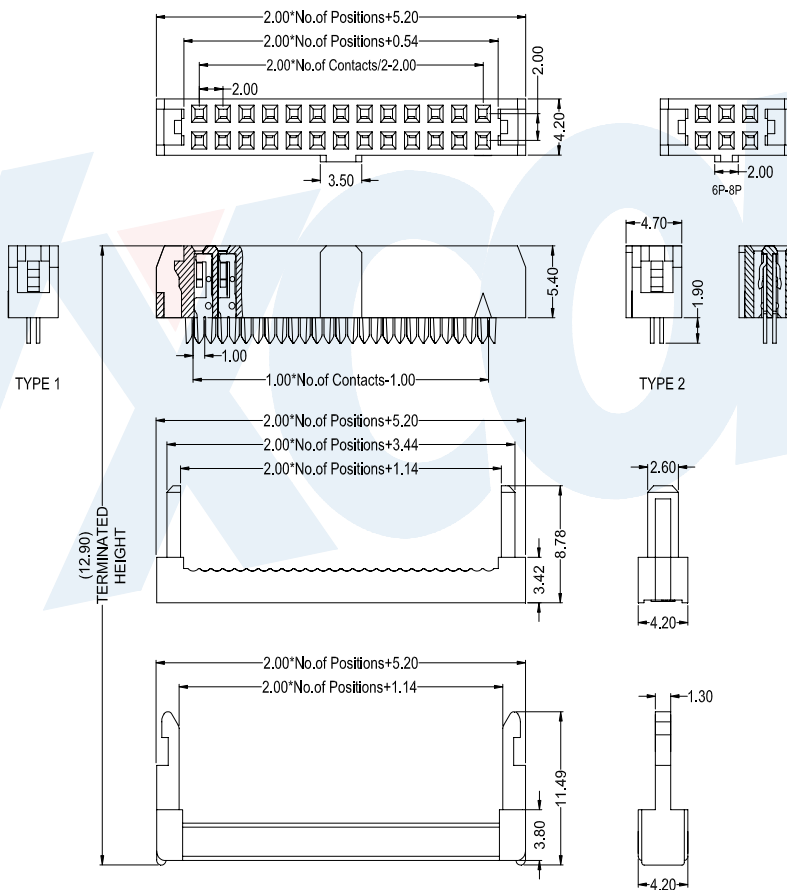


IDC2-XX354XXAYX2

Mating With/配對母座:  
B257



IDC SOCKET



**IDC2-XX**

No. Of Pins Per Row  
06-64P

**3**

**54**

**XX**

**Contact Plating**  
Full Of Gold    Semi-Gold  
A0=0.8u"    B0=0.8U"  
~    ~  
A9=30u"    B9=30U"  
S1=Ordinary Tin Plated  
S2=Matte Tin Plated  
S3=Tin-plated High-temperature

**A**

**Y**

**Insulator Colour**  
B: Black  
G: Grey427  
E: Grey413  
W: White  
U: Blue

**X**

**Journal Number**  
1: Type1  
2: Type2

**X**

## Specifications

備注 (Remark)

1. 材料 (Material)

膠芯: PBT+30%G. F UL94V-0, 顏色: 黑色

Housing: PBT+30%G. F UL94V-0, Color: Black

端子: 磷銅

Contact: Phosphor Bronze

2. 特性 (characteristics):

額定電流: 1.00AMP

Rating Current: 1.00AMP

接觸阻抗: 20mΩ Max

Contact Resistance: 20mΩ Max

絕緣阻抗: 1000MΩ Min

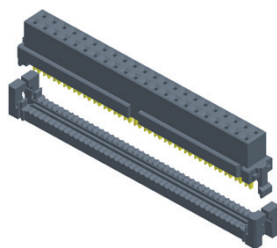
Insulating Resistance: 1000 MΩ MIN

耐電壓: AC 500V

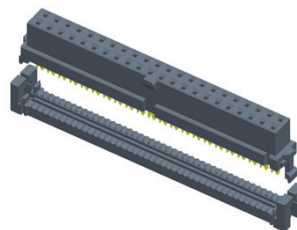
Withstanding Voltage: AC 500V/Minute

溫度範圍: -40° C to +105° C

Temperature Range: -40° C to +105° C

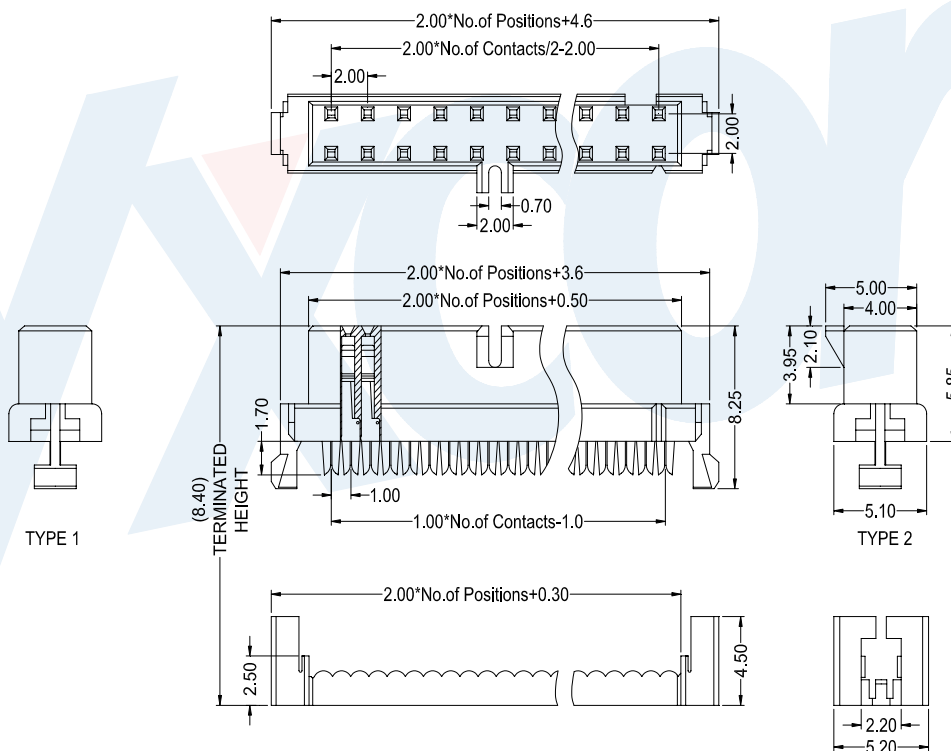
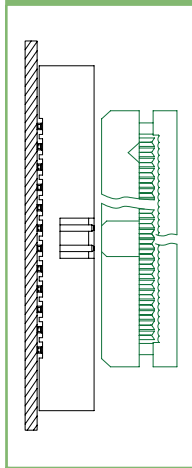


IDC2-XX258XXAYX1



IDC2-XX258XXAYX2

Mating With/配對母座:  
B257



—  
IDC SOCKET

**IDC2-XX**

No. Of Pins Per Row  
06-64P

**2**

**58**

**XX**

**Contact Plating**  
Full Of Gold    Semi-Gold  
A0=0.8u"    B0=0.8U"  
~  
A9=30u"    B9=30U"  
S1=Ordinary Tin Plated  
S2=Matte Tin Plated  
S3=Tin-plated High-temperature

**A**

**Y**

**Insulator Colour**  
B: Black  
G: Grey427  
E: Grey413  
W: White  
U: Blue

**X**

**Journal Number**  
1: Type1  
2: Type2

**X**

## Specifications

備注 (Remark)

1. 材料 (Material)

膠芯: PBT+30%G. F UL94V-0, 顏色: 黑色

Housing: PBT+30%G. F UL94V-0, Color: Black

端子: 黃銅

Contact: Brass

2. 特性 (characteristics):

額定電流: 1.00AMP

Rating Current: 1.00AMP

接觸阻抗: 20mΩ Max

Contact Resistance: 20mΩ Max

絕緣阻抗: 1000MΩ Min

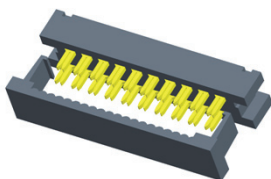
Insulating Resistance: 1000 MΩ MIN

耐電壓: AC 500V

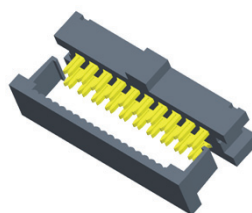
Withstanding Voltage: AC 500V/Minute

溫度範圍: -40° C to +105° C

Temperature Range: -40° C to +105° C

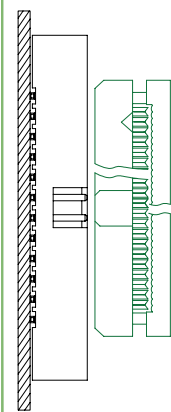


IDC2-XX232XXAQX1

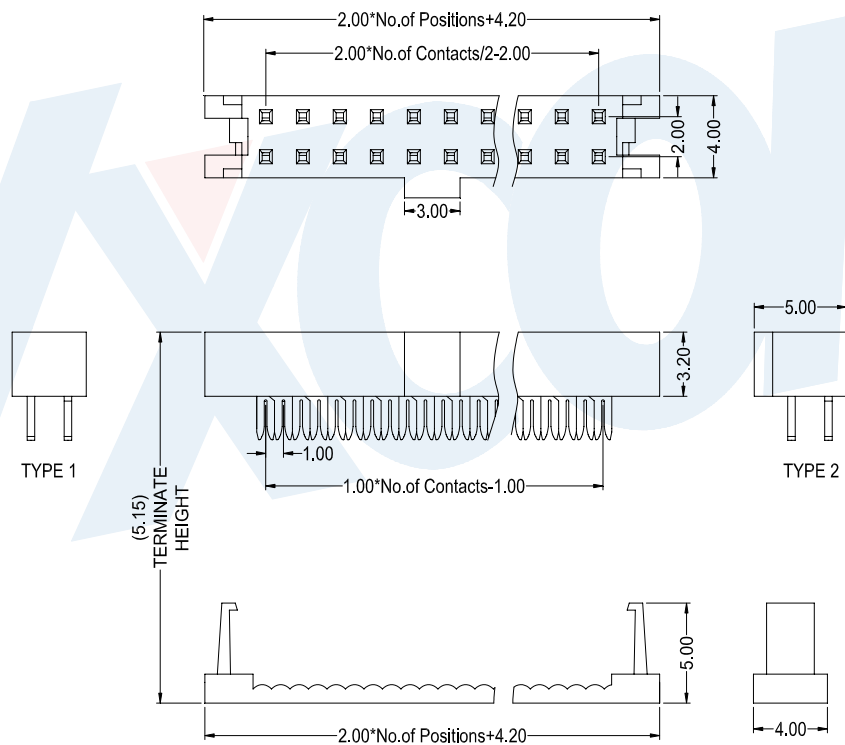


IDC2-XX232XXAQX2

Mating With/配對母座:  
B257



IDC SOCKET



**IDC2-XX**

No. Of Pins Per Row  
06~50P

**2**

**32**

**XX**

**Contact Plating**  
Full Of Gold    Semi-Gold  
A0=0.8u"    B0=0.8U"  
~  
A9=30u"    B9=30U"  
S1=Ordinary Tin Plated  
S2=Matte Tin Plated  
S3=Tin-plated High-temperature

**A**

**Q**

**Insulator Colour**  
B:Black  
G:Grey427  
E:Grey413  
W:White  
U:Blue

**X**

**Journal Number**  
1:Type1  
2:Type2

**X**