

Specifications

Wafer

備注 (Remark)

1. 材料 (Material)

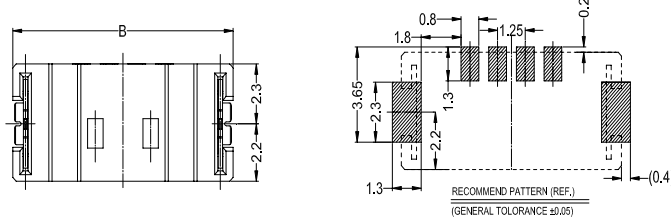
膠芯: LCP UL94V-0

Housing: LCP UL94V-0

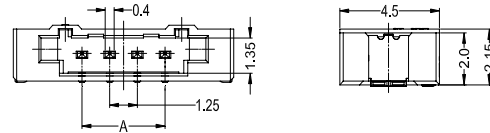
端子: 磷青銅

Contact: Phorphos bronze

9827WRS-XXA-LPXX



9827WRS-XXA-LPXX



9827WRS-XXA-LPSW	LCP UL 94V-0	Phorphos bronze	Tin-Plated (Matte Tin)	9827H-A
9827WRS-XXA-LPSN	LCP UL 94V-0	Phorphos bronze	Tin-Plated	
PART NO	Material	Material (Pin&Solder tab)	Finish (Pin&Solder tab)	Mates With SWB Housing

Poles	Dimensions(mm)	
	A	B
02	1.25	7.45
03	2.50	8.70
04	3.75	9.95
05	5.00	11.20
06	6.25	12.45
07	7.50	13.70
08	8.75	14.95
09	10.00	16.20
10	11.25	17.45

Housing

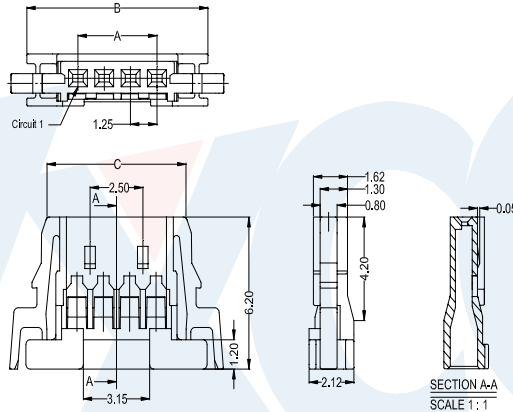
備注 (Remark)

1. 材料 (Material)

膠芯: PA66/LCP UL94V-0

Housing: PA66/LCP UL94V-0

9827H-XXA-XX



9827H-XXA-XX

9827H-XXA-NOHF	PA66 UL 94V-0 Halogen Free	9827T	9827W	1,000Pcs
9827H-XXA-LPHF	LCP UL 94V-0 Halogen Free			Q'ty/Bag
PART NO	Material	Suitable SWB Terminal	Mates With SWB Wafer	

Poles	Dimensions (mm)		
	A	B	C
2	1.25	6.10	4.10
3	2.50	7.35	5.35
4	3.75	8.60	6.60
5	5.00	9.85	7.85
6	6.25	11.10	9.10
7	7.50	12.35	10.35
8	8.75	13.60	11.60
9	10.00	14.85	12.85
10	11.25	16.10	14.10
11	12.50	17.35	15.35
12	13.75	18.60	16.60
14	16.25	19.85	17.85
15	17.50	21.10	19.10
20	23.75	27.35	25.35
30	36.25	39.85	37.85

W

WAFER