

# Specifications

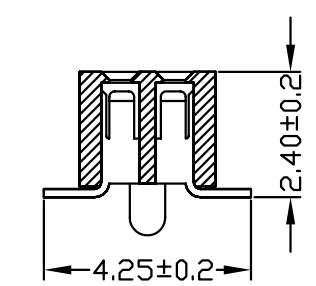
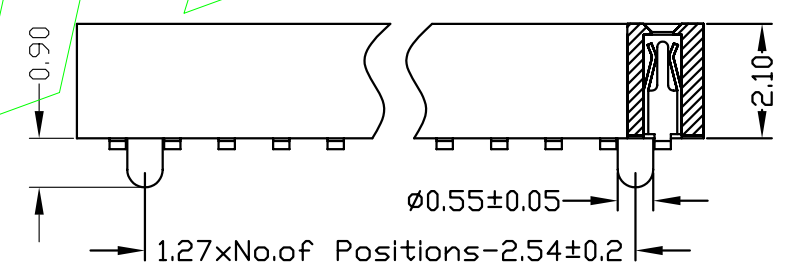
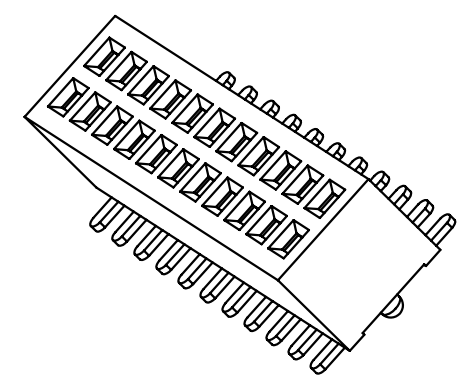
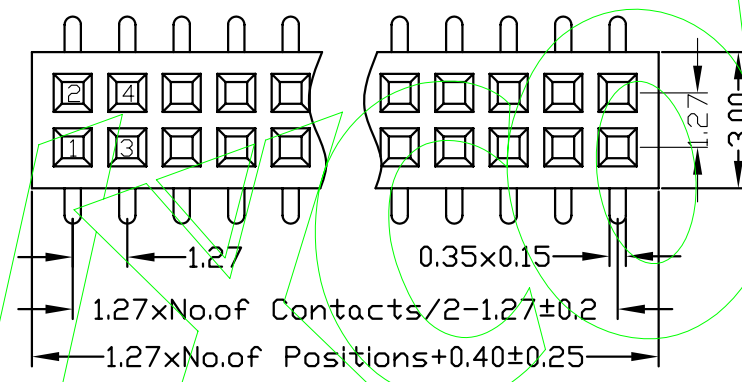
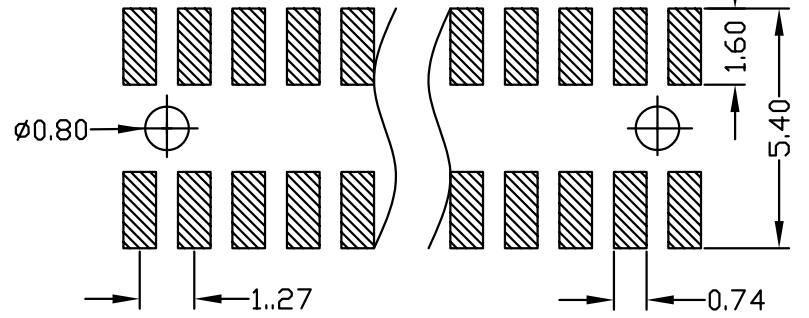
备注 (Remark)  
 1. 材料 (MATERIAL)  
 胶芯: PA6T+30%G. F UL94V-0, 颜色: 黑色.  
 Housing: PA6T+30%G. F UL94V-0, Color: Black  
 端子: 磷铜, 镍底30u"MIN, 表面镀金1u"MIN  
 Contact: Phosphor, 1u"MIN GOLD PLATING OVER ALL  
 30u" MIN NICKEL UNDERPLATING OVER ALL

2. 特性 (characteristics):  
 额定电流: 1 AMP  
 Rating Current: 1 AMP.  
 接触阻抗: 20 mΩ MAX.  
 Contact Resistance: 20 mΩ MAX.  
 绝缘阻抗: 1000 MΩ MIN.  
 Insulating Resistance: 1000 MΩ MIN.  
 耐电压: AC 500V.  
 Withstanding Voltage: AC 500V.  
 温度范围: -40°C to +105°C  
 Temperature Range: -40°C to +105°C

# Ordering Information

F321-12 XX XX X MU X 2

NO. OF PINS PER ROW	Contact Plating	INSULATOR MATERIAL:	PACKING
2-50P	Full Of Gold	B: PA6T	A: PE Bag
	A0=0.8u"	C: PA9T	B: Tape & Reel
	A1=1u"	D: LCP	C: Tube
	A2=1.5u"		D: Tube+CAP
	A3=2u"		E: Tray
	A4=3u"		
	A5=5u"		
	A6=10u"		
	A7=15u"		
	A8=20u"		
	A9=30u"		
	S1=Ordinary Tin Plated		
	S2=Matte Tin Plated		
	S3=Tin-plated High-temperature		



				OPERATION		SCALE		Fit		东莞市宇熙精密连接器有限公司 Dongguan Yuxi Electronic Co., Ltd.	
				X.X	±0.25	UNIT		MM			
				X.XX	±0.20	SIZE	A4	DESIGN	卢小强	PART NO.	F321-12XXXXXMUX2
				X.XXX	±0.10	SHEET	1/2	CHECK		TITLE:	1.27mm 双排母 塑高2.1 SMT U型 带内柱
REV	DATE	MODIFICATION DESCRIPTION	CHANGE	APPROVE	Angle	±3°	PROJ.	APPROVE		Customer No.	