

## Specifications

備注 (Remark)

1. 材料 (Material)

膠芯: PA9T/LCP+30%G. F UL94V-0, 顏色: 黑色

Housing: PA9T/LCP+30%G. F UL94V-0, Color: Black

端子: 黃銅

Contact: Brass

2. 特性 (characteristics):

額定電流: 7.00AMP

Rating Current: 7.00AMP

接觸阻抗: 30mΩ Max

Contact Resistance: 30mΩ Max

絕緣阻抗: 1000MΩ Min

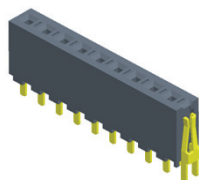
Insulating Resistance: 1000 MΩ Min

耐電壓: AC 1000V/分鐘

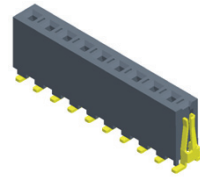
Withstanding Voltage: AC 1000V/Minute

溫度範圍: -40° C to +105° C

Temperature Range: -40° C to +105° C

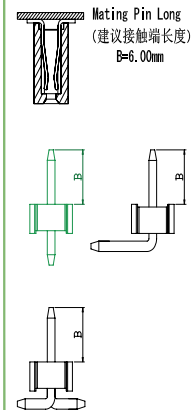


F789-11XXXXXSUX1

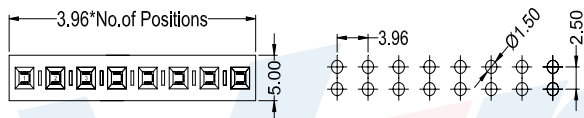


F789-11XXXXXMUX1

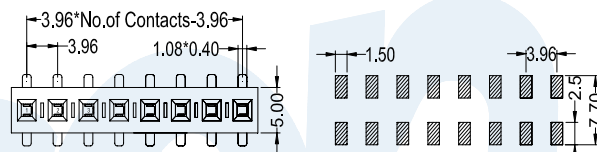
Mating With/配對公座:  
P731/P732



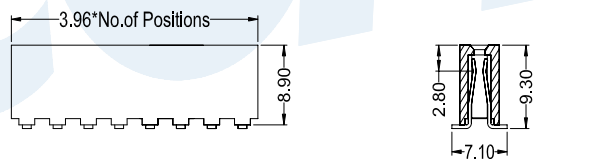
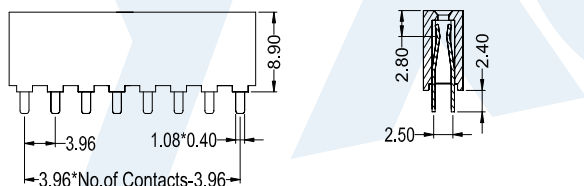
FEMALE HEADER



Recommended P.C.B Layout



Recommended P.C.B Layout



**F 7 8 9 - 1 1**

**X X**

**X X**

**X**

**X**

**U**

**X**

**1**

**No. Of Pins Per Row**  
02~20P

**Contact Plating**  
Full Of Gold A0=0.8u"  
Semi-Gold B0=0.8U"  
~  
A9=30u" B9=30U"  
S1=Ordinary Tin Plated  
S2=Matte Tin Plated  
S3=Tin-plated High-temperature

**Insulator Material:**  
B:PA6T  
C:PA9T  
D:LCP

**Contact Shape:**  
S: Straight  
M: SMT

**Packing**  
A: PE Bag  
B: Tape & Reel  
C: Tube  
D: Tube+CAP  
E: Tray